



Investments in sustainable buildings

DTI Copenhagen, 07.11.2017





Orhan Ongun

- Bachelor, Civil Engineering
Ingeniørhøjskolen Odense Teknikum, 2001
- Head of Construction Department
Lidl Denmark, 2015-today, in the company since 2005



Agenda

- 01 About Lidl
- 02 Warehouse Køge
- 03 Store Sjælør Boulevard
- 04 Store Aabenraa



Agenda

- 01 About Lidl
- 02 Warehouse Køge
- 03 Store Sjælør Boulevard
- 04 Store Aabenraa



Statistics

- First store in Denmark opened in 2005
- 110 stores today
- Headquarter in Kolding
- Warehouse in Kolding and Køge
- More than 2.500 employees in Denmark
- More than 10.500 stores in 29 countries in Europe and USA

Europe's biggest discount retailer



About Lidl

Why work for sustainability?



Because we are aware of the consequences of climate changes!

Milestones for sustainability

- 2007 Cooling liquid system changed to a CO₂-based system
- 2010 Cooling system connected with heat pump
- 2012 Design of the prize-winning bicycle concept
- 2013 Sales area with LED lighting, and Solar panels on roof
- 2014 Complete LED lighting
- 2014 Energy efficient warehouse
- 2015 Europe most sustainable grocery store
 - LEED Platinum certified
- 2016 New concept store in Aabenraa
- 2017 ISO 50 001 certified for all HQ, stores and warehouses.



Agenda

01 About Lidl

02 Warehouse Køge

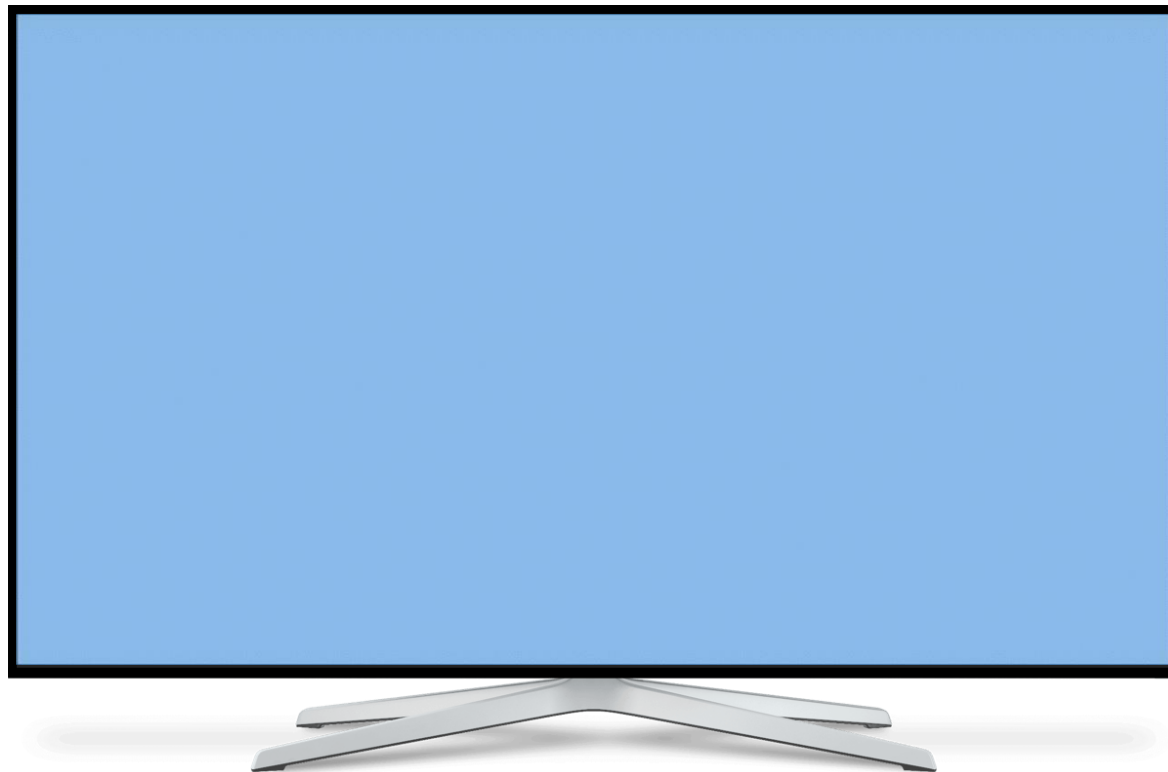
03 Store Sjælør Boulevard

04 Store Aabenraa



About Lidl

Video - Køge

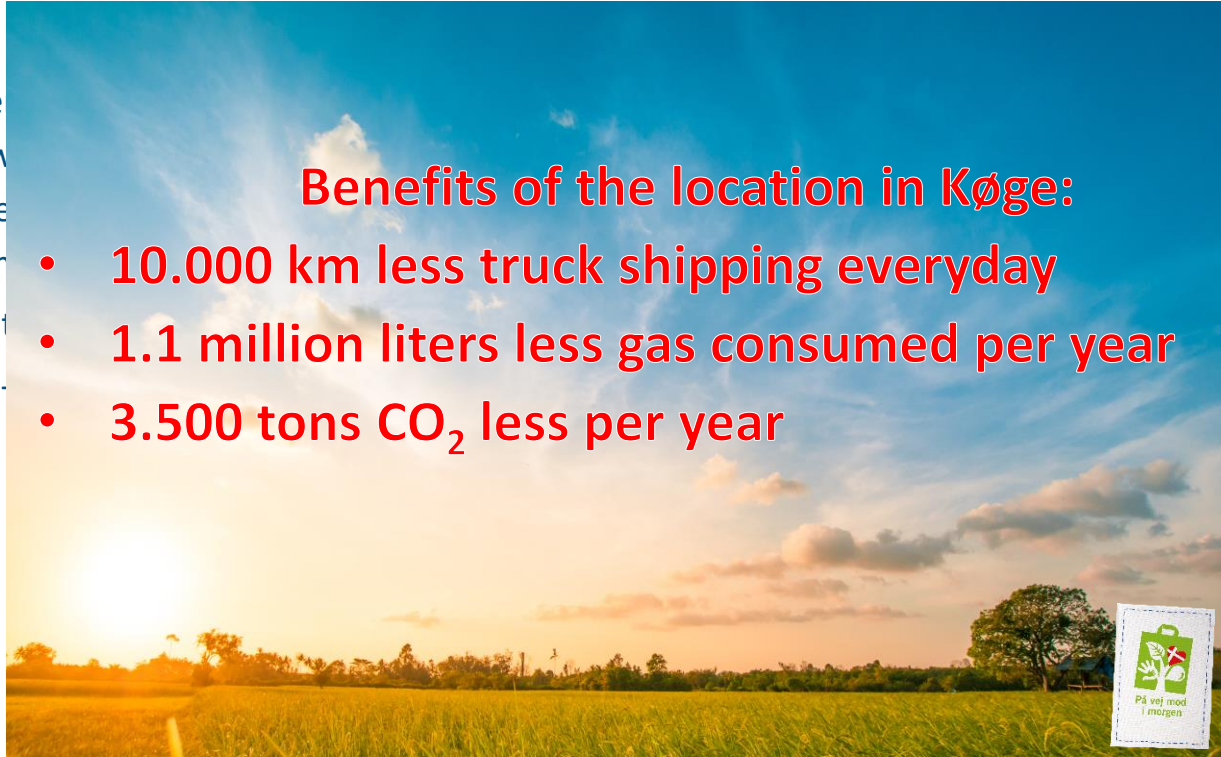


Facts about the warehouse – opened 2014

- 25% lower energy consumption than other buildings – Low energy buildings
- The warehouse is 10% cheaper to build than the warehouse in Køge
- LED lighting with 50% lower energy consumption
- Heat recycling system
- Solar panels

Benefits of the location in Køge:

- 10.000 km less truck shipping everyday
- 1.1 million liters less gas consumed per year
- 3.500 tons CO₂ less per year



Agenda

- 01 About Lidl
- 02 Warehouse Køge
- 03 Store Sjælør Boulevard
- 04 Store Aabenraa

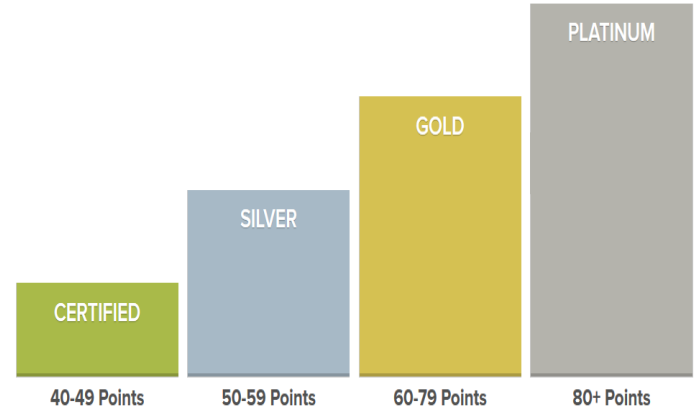
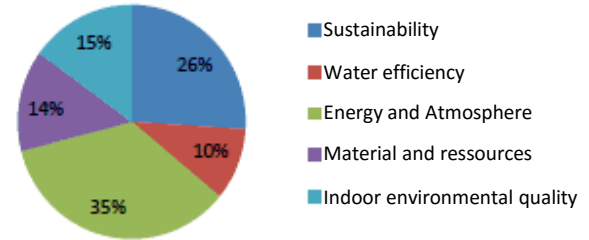


Video – Sjælør Boulevard



What is LEED

- LEED is one of the biggest green building certification programs in the world.
- It is the most popular certification in Asia, USA and Europe



Europe's most sustainable grocery store

- Heat reused from refrigeration
- Ground heating
- Electricity from solar panels
- Rainwater reused for sprinkling and toilet flush

- Recycling bricks from old barracks
- FSC approved trees used for construction



Europe most sustainable grocery store

- Solar panels
- Green roof: Grass area to retain water



Europe most sustainable grocery store

- Football field on the roof for local children care center



Europe most sustainable grocery store

- LED lighting



Europe most sustainable grocery store

- Car charging station



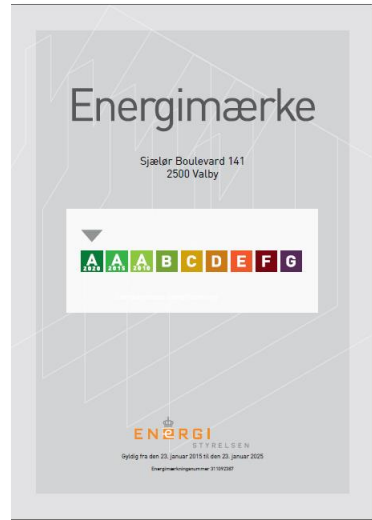
Europe most sustainable grocery store

- bicycle concept



Europe most sustainable grocery store

- Info screen showing solar panels energy production



Europe most sustainable grocery store

- Special delivery truck powered by biogas



Investments and cost



Example	Return on invest. (year)	Cost
Energy efficient cooling system	4	226.000 kr.
Solar panels 285 m ²	12	754.000 kr.
Ground heat	12	120.000 kr.
Rainwater collect	153	201.000 kr.

Development	Cost
Technical consultations and certification	1.000.000 kr.



Results

Economical and environmental results

- Ground heat
-50.000 kWh/year =  11 households yearly energy consumption
- Solar panels
-9.5 tons CO₂ per year =  190.000 km driven by a car
- The LED lighting
-31.000 kWh/year =  7 households yearly energy consumption

Social results

- Prize-winning bicycle parking concept
- Football field used by many children associations

LEED Platinum award – Europe's most sustainable grocery store

“Congratulations on earning LEED certification, and thank you for your commitment to our common goal of building a healthy and sustainable future.”

S. Richard Fedrizzi
President, CEO & Founding Chairman
U.S. Green Building Council



Agenda

01 About Lidl

02 Warehouse Køge

03 Store Sjælør Boulevard

04 Store Aabenraa

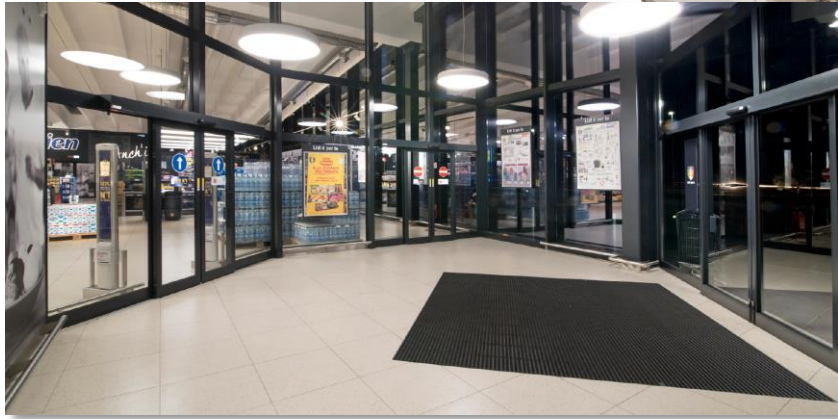


Video - Aabenraa



Legacy from Sjælør Boulevard

- LED lighting



Legacy from Sjælør Boulevard

- Solar panels, 100 kWh



Legacy from Sjælør Boulevard

- Charging station for cars and bicycle



Legacy from Sjælør Boulevard

- Integrated Heat pump



Integrated Heat pump explanation



Do you have ideas, suggestions?
So contact us and we will try our best to do it.



Lidl Denmark