



Product recognition, DynaCQ-R

Automatic routing of products in crates or on the belt. Increase capacity and accuracy of product destination and routing with the DynaCQ-R at a lower labour cost.



Recognized as Fat trim, rind on, - middle



Recognized as Fat trim, rind on, - forend

DO YOUR PRODUCTS END UP IN THE CORRECT PLACE?

Visual identification of product types is a labour-intensive process, which requires highly skilled operators. The error level in manual recognition is typically 2-3% due to erroneous recognition and typing errors. This applies to both products in crates and on the belt being routed to specific packaging machines or packing lines. DynaCQ-R automates the product recognition process thereby increasing capacity and reducing labour costs and errors.



AUTOMATIC PRODUCT ROUTING

DynaCQ-R allows for a faster recognition process and takes out the human element of error. The DynaCQ-R software will flag doubtful products, e.g. products deviating from specifications, for manual inspection. Using DynaCQ-R for product recognition allows one operator to handle 2-3 crate lines.

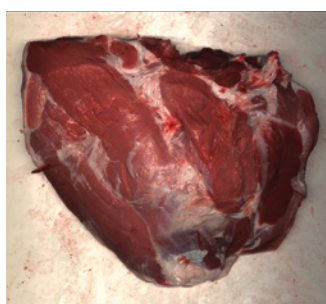
MONITOR FOR FOREIGN OBJECTS

DynaCQ-R also analyses the product surface for small unwanted objects like plastic fragments (down to 1.5x1.5 mm). Contaminated crates are stopped on the line, until an operator has removed the unacceptable content.

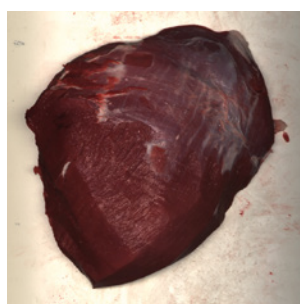
DYNACQ-R OFFERS

- Automatic product recognition for routing with a 95-99% recognition rate
- Validated for pork and beef products
- Detection capacity of up to 1 product or crate pr. sec.
- Can be fitted with DynaCQ-D automatic foreign object detection software (including low density and non-metallic objects)
- Documentation of your products by stored images

DynaCQ-R is designed to be installed on top of existing high capacity conveyors.



Recognized as Beef Top round, cap on



Recognized as Beef Top round, cap off

DYNACQ DETAILS

Field of view	Cabinet Dimensions, cm
51 cm/20"	H120xW60xD91 or H63xW35xD67
76 cm/30"	H120xW60xD116 or H63xW35xD92

- Power/use: 110/230 V AC, 300 W
- IP66/69 Cabinet
- Industry wash down air locks
- EMC, CE, EU 852/853/1935 (2004)
- Minimum detectable FO size: ≥ 1.5x1.5 mm (product and FO specific)

ABOUT US

We are an innovation and consultancy organization. We have spearheaded innovation and created a true competitive advantage for international meat companies for more than 60 years. Our services are always based on our extensive research and development programs. DMRI is a division of Danish Technological Institute.

CONTACT

PRODUCT MANAGER
NIELS T. MADSEN
 NTM@DTI.DK
 +45 7220 2690

