



DPM Pig Gambrel Control

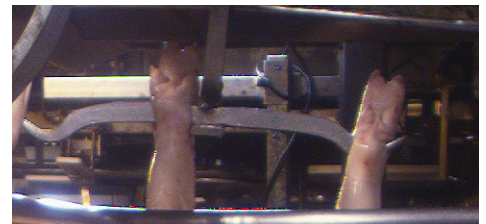
Ensure that your pork carcasses are hanging correctly on the gambrel and that your gambrels are fit for purpose. An automatic Digital Process Monitoring (DPM) is now possible by means of an advanced vision solution.

The pork carcass must be placed correctly in the gambrel to ensure that automatic slaughter processes are performed correctly.

E.g., if the carcasses are not hanging straight and/or is not centered correctly, it will likely result in faulty bung opening and back finning. The results are product loss, reduced quality, and expensive corrections. Furthermore, it can cause line stops and ultimately it can cause damage to process equipment. The Vision Control can alert operators to rectify the problem before errors occur, or ultimately set up the process control to stop the line until the problem is solved.

In addition, gambrels can be worn out over time, or they can become damaged. This also frequently results in faulty process execution or in carcasses dropping off the conveyor with product loss or even person damage as a result.

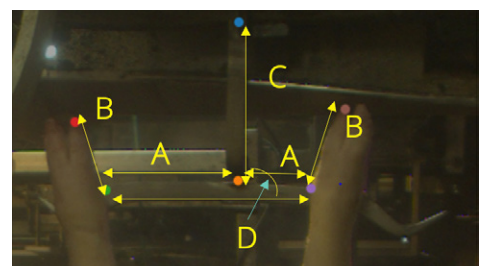
The DPM Gambrel Control system checks if every gambrel is within specification and will flag faulty gambrels for repair or disposal.



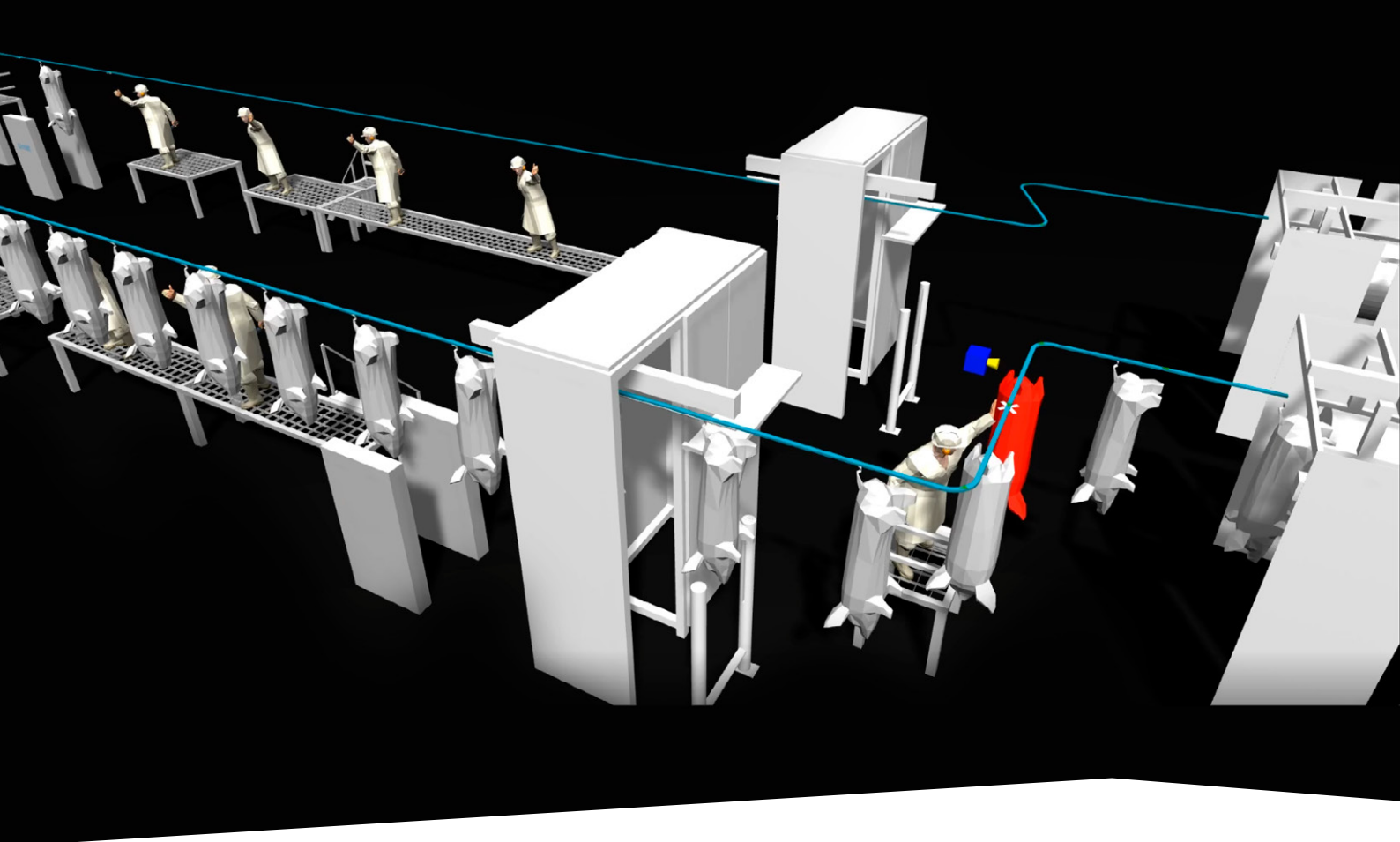
Incorrect feet and reverse position of carcass



Correct position of carcass



Parameters checked on carcass and gambrel (incorrect position of carcass)



DPM PIG GAMBREL CONTROL OFFERS

- 1 camera system monitoring position of pig hind legs and gambrel quality
- Detect position of hind legs in the gambrel
- Control gambrel specifications – length and angle
- Avoid operator fatigue
- Fewer line stops
- Less damage of equipment
- Less product loss
- Less risk of person damage

The DPM Pig Gambrel Control is easily installed on the slaughter line. A washdown compatible steel cylinder containing the camera is placed in front of the conveyor. The camera records images covering the upper edge of the conveyor to 10-15 cm below the gambrel.

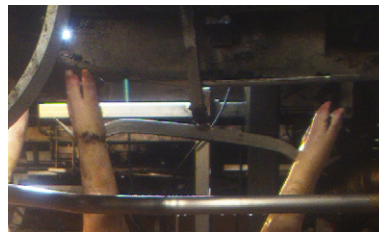
The images are analyzed online, and an alert notifies an operator or whether the specific gambrel needs to be removed for repair or disposal.

The system can be offered to run on your own server (max distance to switch < 100m).

Alternatively, the system can run on a dedicated computer.

SPECIFICATION DETAILS

- Power/use: 230 V AC
- Industry wash down
- EMC, CE, EU 852/853/1935 (2004)
- Standard configuration capacity: EU line speed



Gambrel to be flagged for inspection



incorrect position of feet

DMRI —

Food innovation for the future



Niels Toftelund Madsen
Business Manager
M ntm@teknologisk.dk
T +45 72 20 26 90
www.DMRI.com



**DANISH
TECHNOLOGICAL
INSTITUTE**